

QPOD™ INSTALLATION INSTRUCTIONS

TOOLS FOR THE JOB:



SABRE SAW



EXPANDING FOAM



BATTERY DRILL



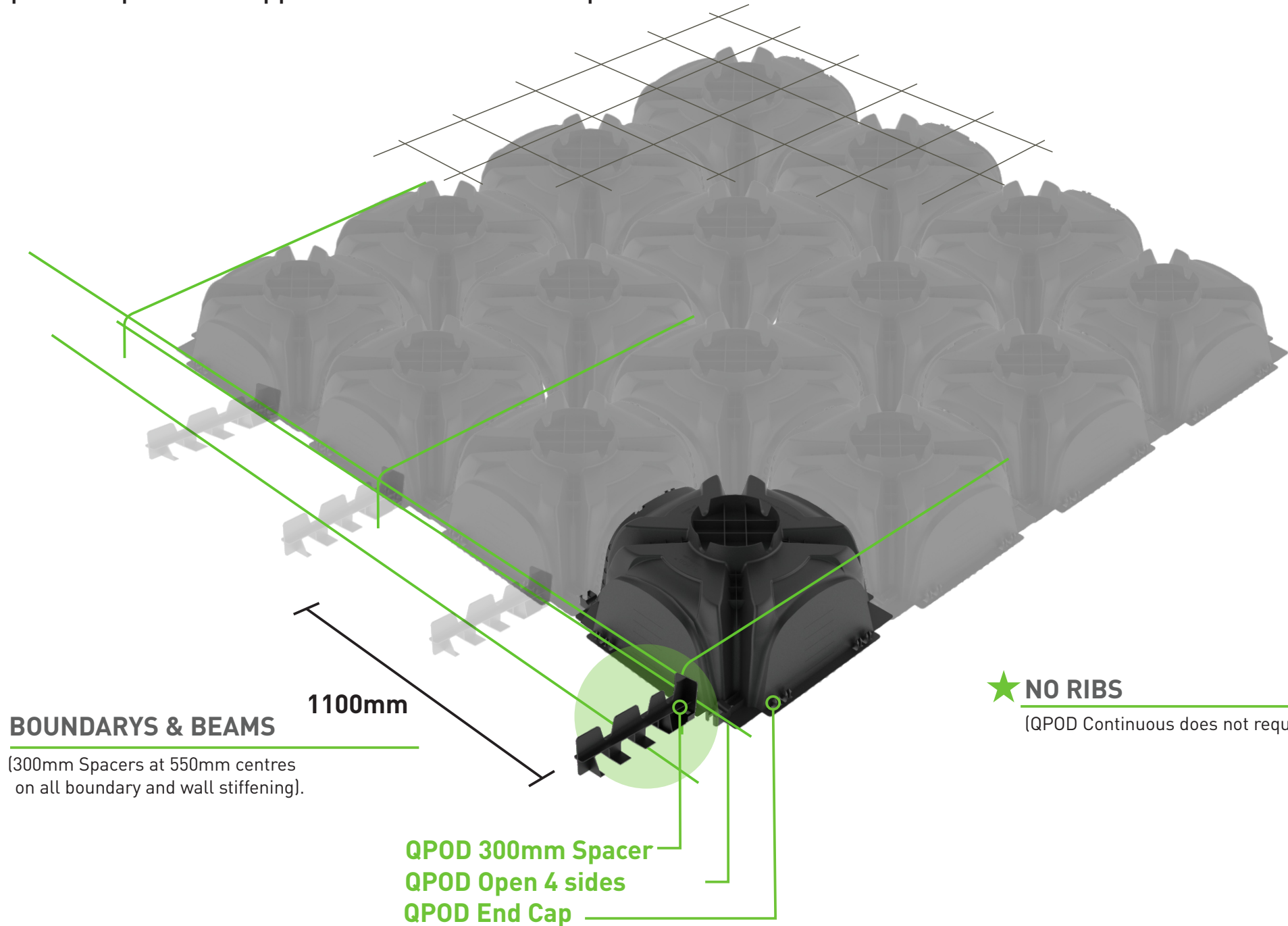
HOLE SAW KIT



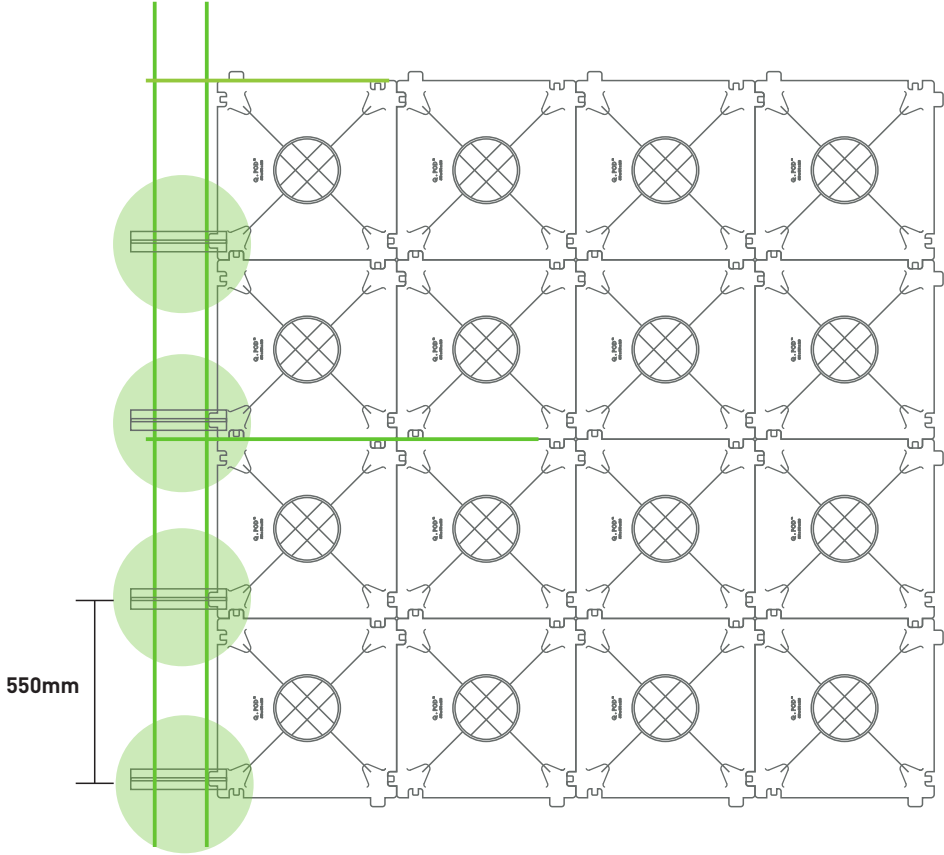
GLOVES

QPOD™ **PLACEMENT OF COMPONENTS Fig. b**

Place 300mm spacers at 550mm centres for perimeters & beams.
Open side pods are capped off with the QPOD Cap.

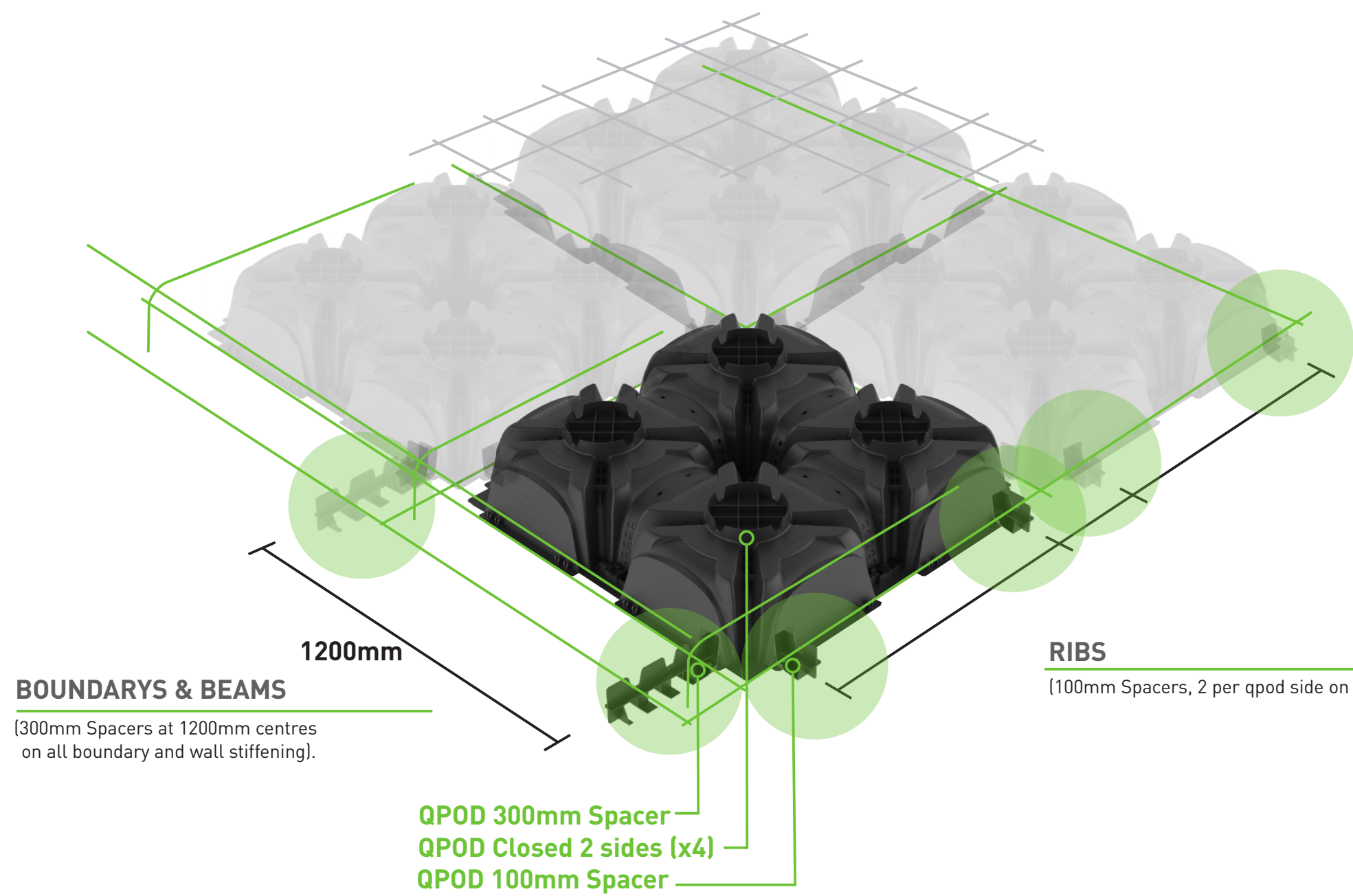


★ **NO RIBS**
(QPOD Continuous does not require ribs).

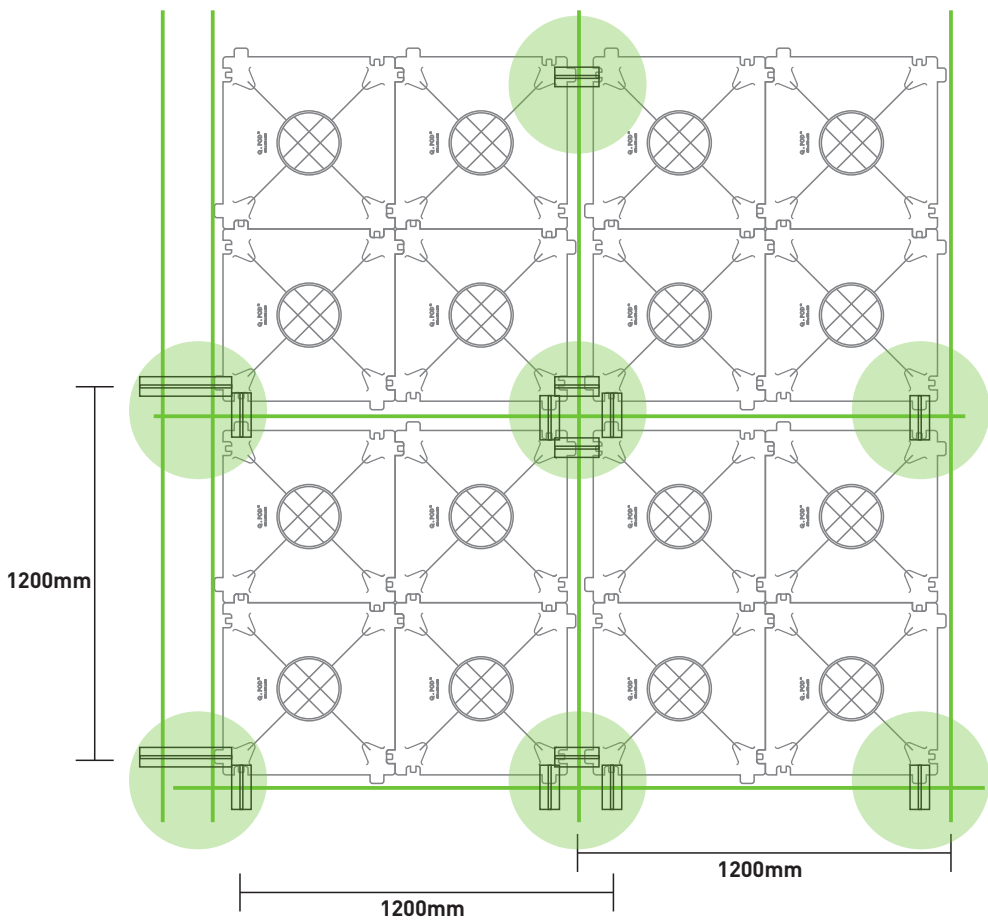


QPOD™ **PLACEMENT OF COMPONENTS Fig. a**

Place 100mm spacers 2 per side of pods for all ribs.
Place 300mm spacers at 1200mm centres for beams.



RIBS
(100mm Spacers, 2 per qpod side on all ribs).

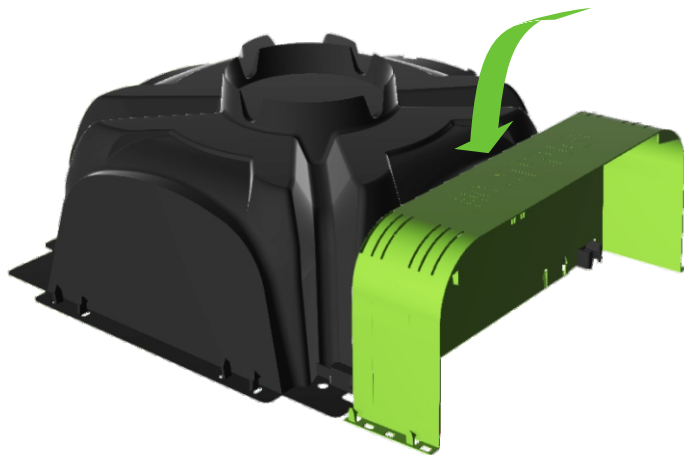


QPOD™ EXTENDERS Fig. c

Where less than 4x pods in a square are required simply pull apart accordingly and re-assemble with QPOD Extenders and end caps.

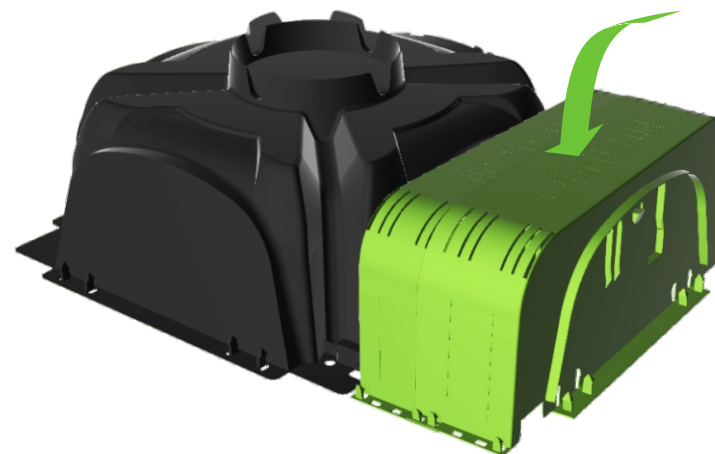
STEP 1.

Clip flat face of QPOD Extender to disassembled QPOD



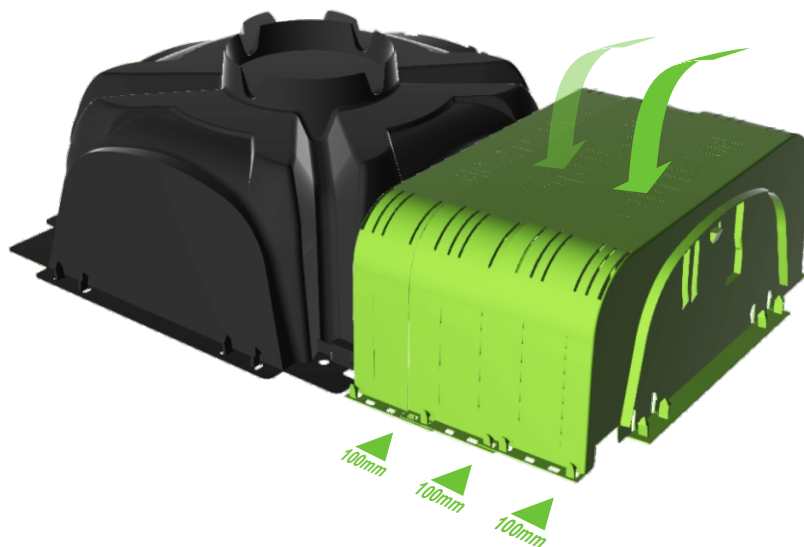
STEP 2.

Clip open side of QPOD Extender to 1st Extender.



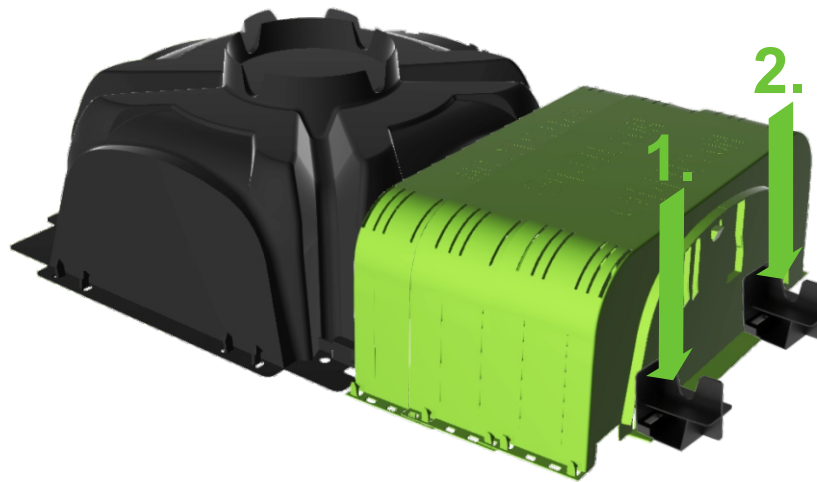
STEP 3.

Continue adding QPOD Extenders at 100mm increments.
Combine up to 5 to make 500mm before using again a QPOD (550mm).



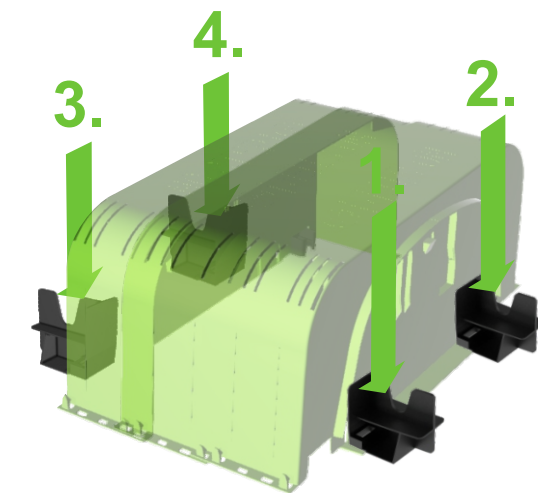
STEP 4.

Attach 2 QPOD spacers at the end of the extension to stabilize.
QPOD spacers are available in 100mm, 300mm & 400mm sizes.



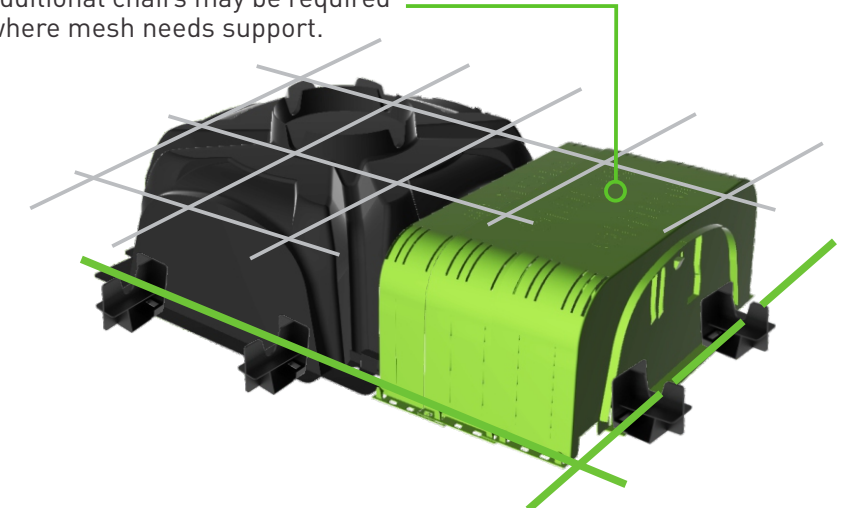
QPOD™ STANDALONE EXTENDERS Fig. c

Where the extender is not attached to a group of pods QPOD extenders can be assembled in a group alone. It is of most importance 2x spacers are clipped to the part at each end to stabilize the configuration.



IMPORTANT!
Clip 2 spacers on the end of each extender.

Additional chairs may be required where mesh needs support.



QPOD™ PLUMBING & SERVICES

Services for a QPOD foundation is preferred to be arranged underground leaving only vertical penetrations in the pod configuration according to local consent and ground condition specifications. Follow standard detailing procedure for penetration. The following instruction applies only to specific locations where services are preferred above ground due to seismic movement concerns. (Check with plan details or local plumber for regional standard practice).

See Std detailing downloads for full detail: <https://www.qpod.nz/resources/>

SERVICES ABOVE GROUND

If services are going to be places above ground please follow the correct method demonstrated here for best results:

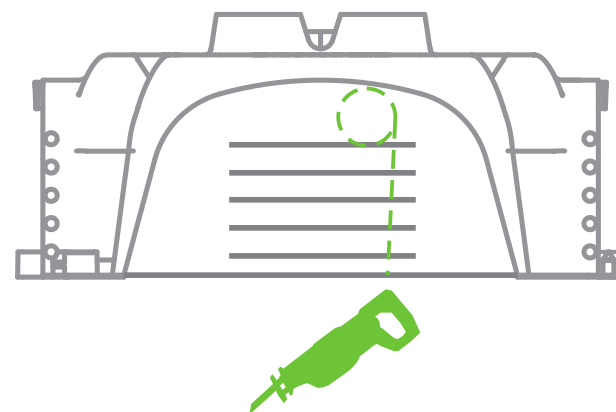
1. Services are placed and trenched according to the QPOD layout plan **before** QPOD configuration is laid.
2. As QPOD configuration is laid holes are cut in the side of pods to create the necessary fall required, please see diagram a. 'creating fall' on following page.
3. Follow method described in diagram c. to cut holes in QPOD Closed 2 sides pods or QPOD End caps.
4. Use flexible sealant and foam lagging to seal off all penetrations appropriately.

DIAGRAM (c):

Cutting service holes in QPOD.

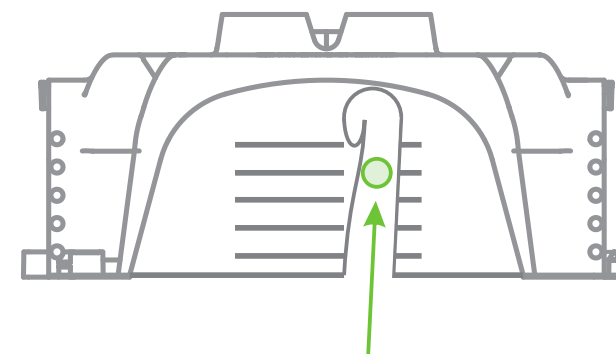
STEP #1

Using sabre saw cut a hole maximum 50mm bigger than service pipe, (maximum service pipe for horizontal rib penetrations is 50mm).



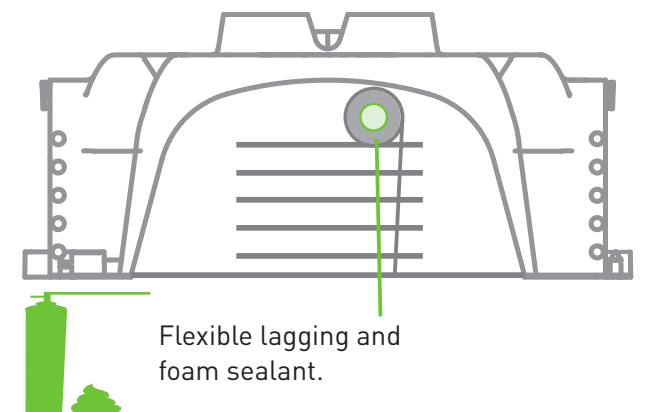
STEP #2

Fold back cut to slot pod over the pipe. Repeat this on each pod creating the required fall based on Creating Fall on following page, diagram a & b.



STEP #3

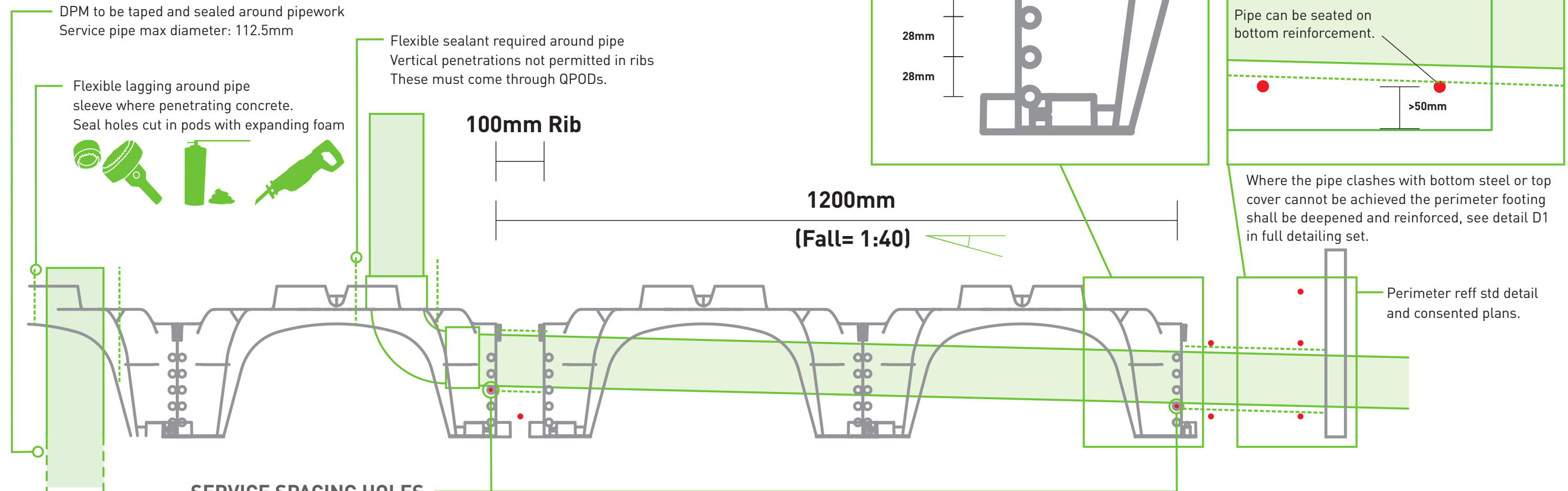
Seal service pipes with flexible lagging and foam sealant as per specification.



QPOD™ CREATING FALL FOR PLUMBING WASTE

DIAGRAM (a):

Creating Fall with QPOD service spacing holes.
Various methods and sizes for 8-25mm are adopted such as; flexible foam or poly sleeves on up to 112mm pipe.
Check with plan details or local plumber for regional standard practice.



SERVICE SPACING HOLES

Using the service spacing holes, a feature provided with the QPOD System allows waste plumbing to be given the correct fall (1:40) when selecting the next hole down at every 1200mm increment.
Use 8-12mm reo bar (or similar) to thread through holes.

DIAGRAM (b):

Demonstrating QPOD service spacing holes.

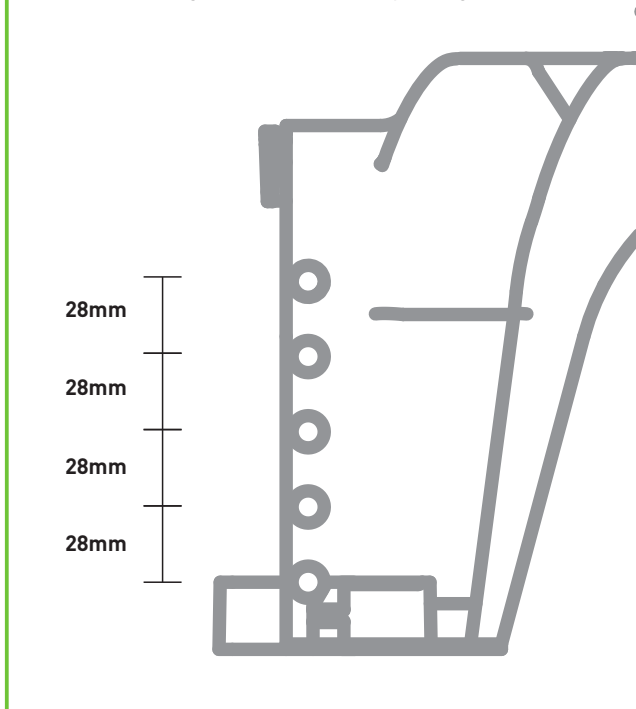
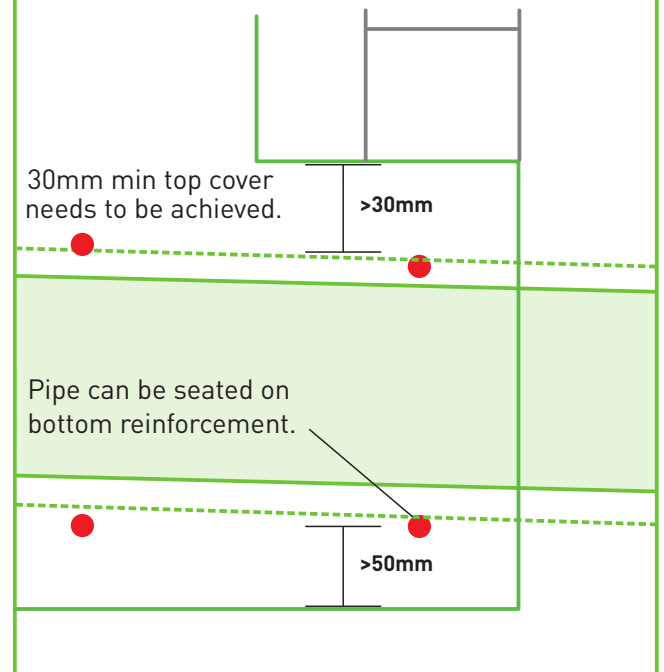


DIAGRAM (c):

Demonstrating QPOD service brick rebate perimeter penetration



Where the pipe clashes with bottom steel or top cover cannot be achieved the perimeter footing shall be deepened and reinforced, see detail D1 in full detailing set.

Perimeter reff std detail and consented plans.

See Std detailing downloads for full detail: <https://www.qpod.nz/resources/>

QPOD INSTALLATION INSTRUCTION. **p 6.**

Contact Us:

15 Thames Street, Pandora, Napier 4110, New Zealand

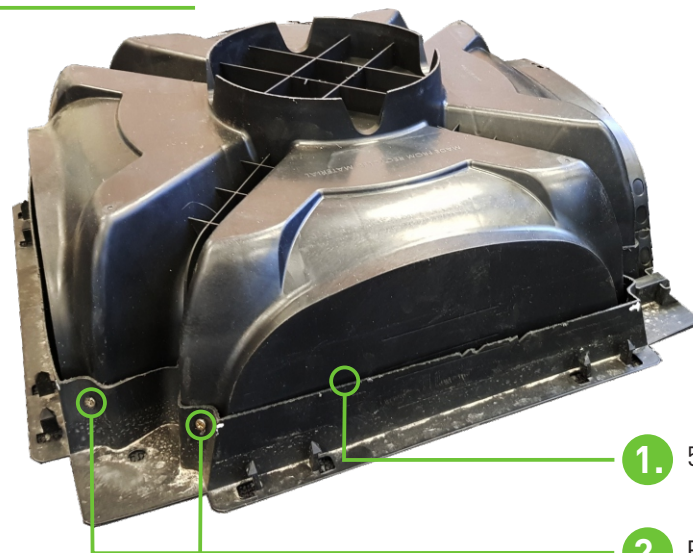
PH +64 6 835 5463
Fax +64 6 835 0693
NZ Free 0800 55 33 00
w www.qpod.nz

QPOD™ **SHOWER RECESS**

Shower recesses can be formed to a maximum of 50mm by lowering the QPOD standard height of 220mm.

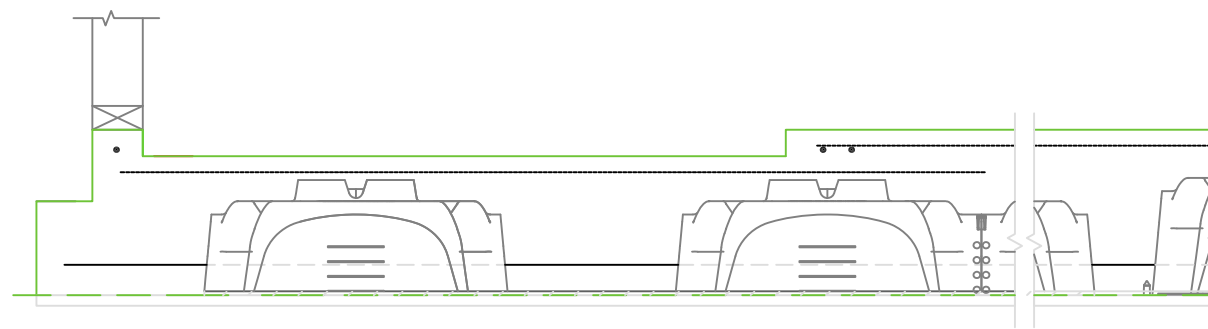
QPOD allows solution (a) pictured here, where the QPOD is reduced 50mm in height. These are available to purchase pre-made from QPOD for your site.

SOLUTION (a):

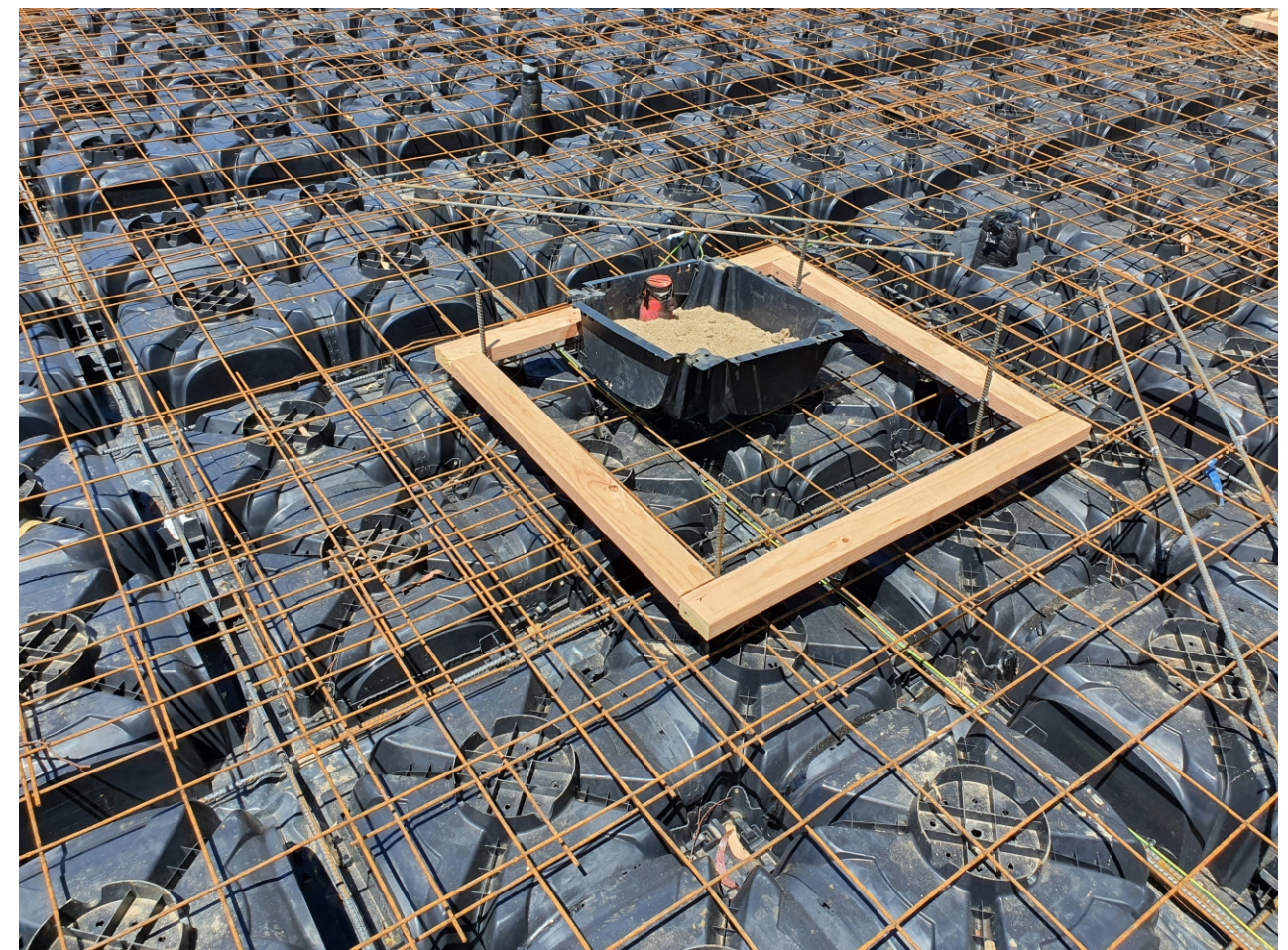


1. 50mm cut off bottom of pod

2. Reattached with 4 screws per pod



QPOD's modified shower recess with 50mm cut from bottom to reduce the height.



Contact Us:

15 Thames Street, Pandora, Napier 4110, New Zealand

PH +64 6 835 5463
Fax +64 6 835 0693
NZ Free 0800 55 33 00
w www.qpod.nz